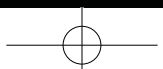


dji



DJI TERRA

Make the World Your Digital Asset





Digitize the World Around You



Public safety

Achieve rapid turnaround time for gathering on-site critical information



Construction

Collect, measure and analyze data with accuracy across projects

Plan. Process. Analyze and Execute.

Capture, analyze and visualize your environment with DJI Terra - an easy to use mapping software developed to help industry professionals transform real-world scenarios into digital assets.



Infrastructure

Easily perform detailed inspections on complex assets and structures



Agriculture

Get an in-depth understanding of your field to help you generate greater yields

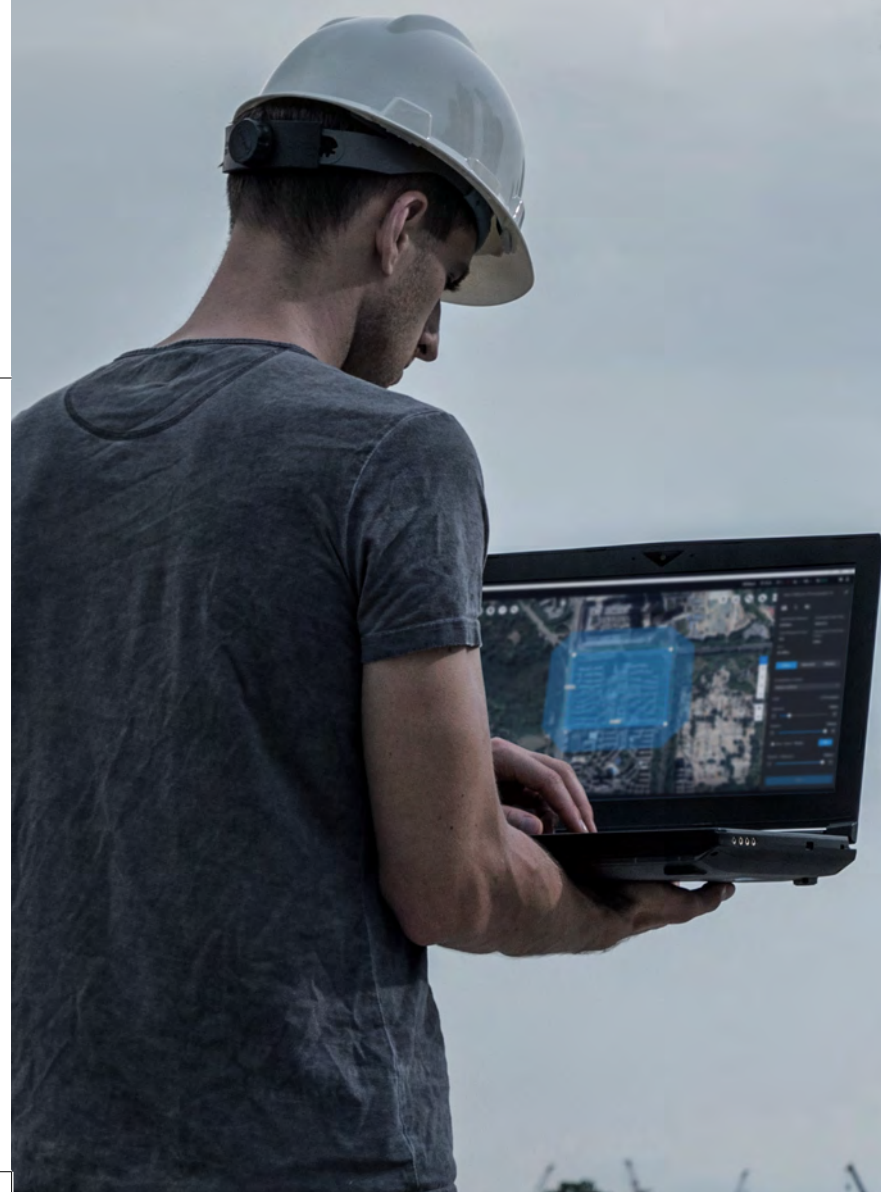


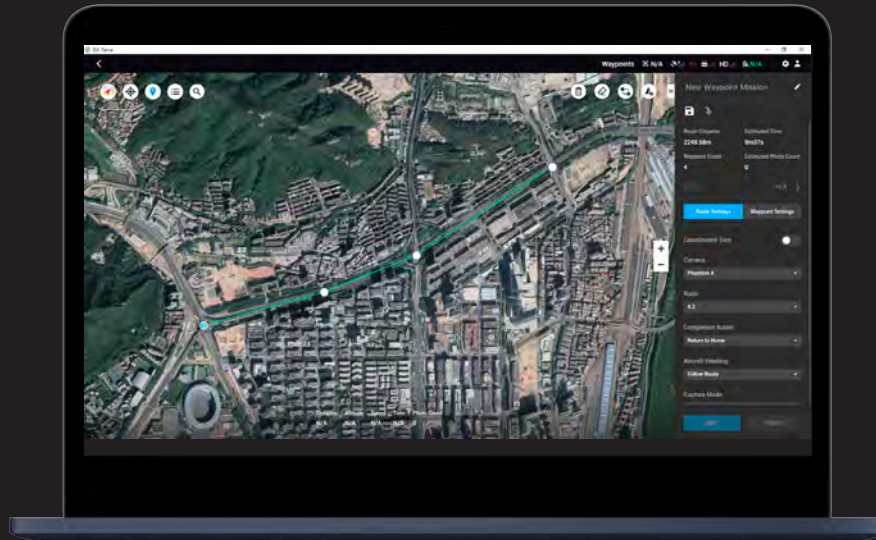
Filming

Optimize previsualization to improve planning workflows across your team



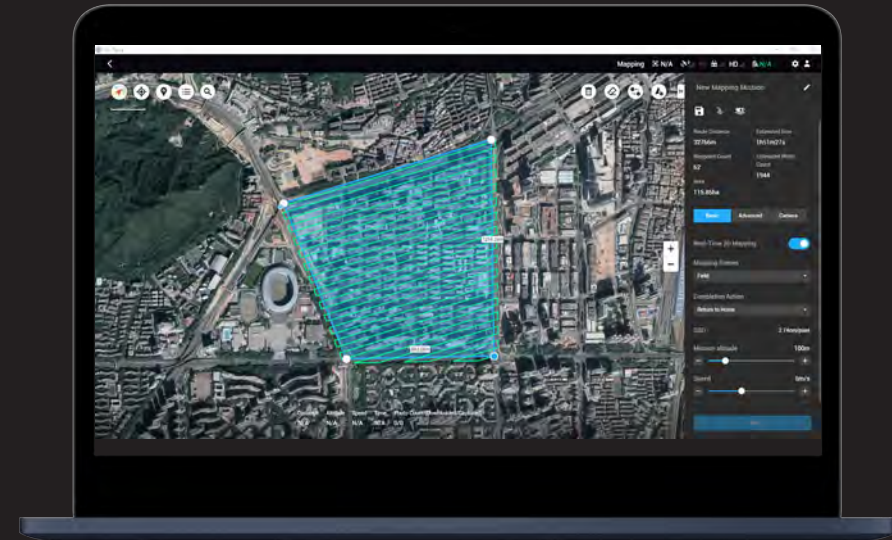
Mission Type





Waypoints Mission Planning

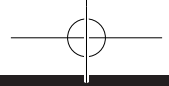
Create efficient flight paths using predefined waypoint actions and adjustable parameters like altitude, speed, gimbal pitch angle, aircraft heading and more. For more complex and tight missions that require high attention to detail, use 3D Flight Visualization to design and simulate tasks on existing 3D models.



Area Mission Planning

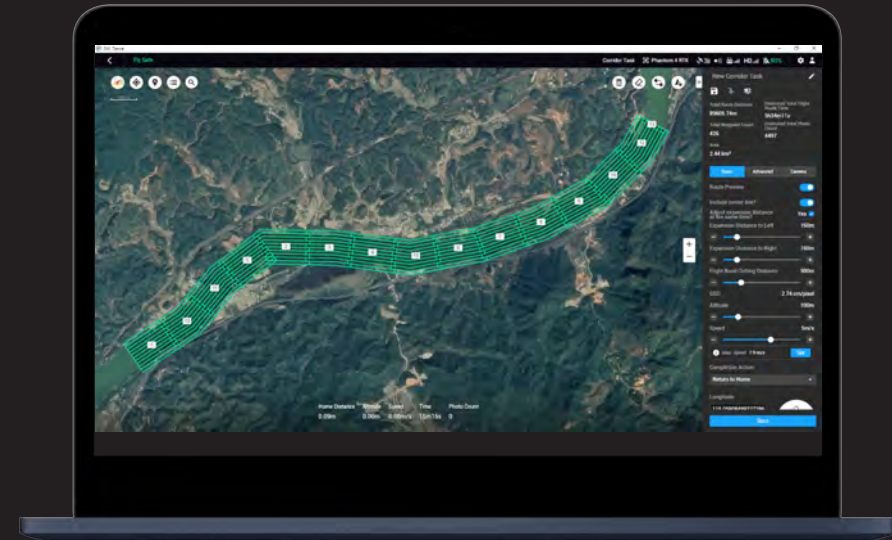
With just a few taps on the screen, you can automate complex missions, allowing you to seamlessly capture imagery which can be processed to produce a variety of maps and models for further analysis, and to aid decision-making.





Oblique Mission Planning

When accuracy is essential and details are vital to your critical operations, Oblique lets you capture a rich 3D model data set by adjusting the angle of the camera at a tilted angle, giving you an extra crisp view of the asset.



Corridor Mission Planning

Create automated flight missions around roads and railways by simply drawing a line on the map. Adjust mission settings to change the total area mapped, giving you the flexibility to choose between creating high-definition 2D maps and 3D models or quick overviews.

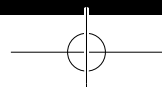




Mapping

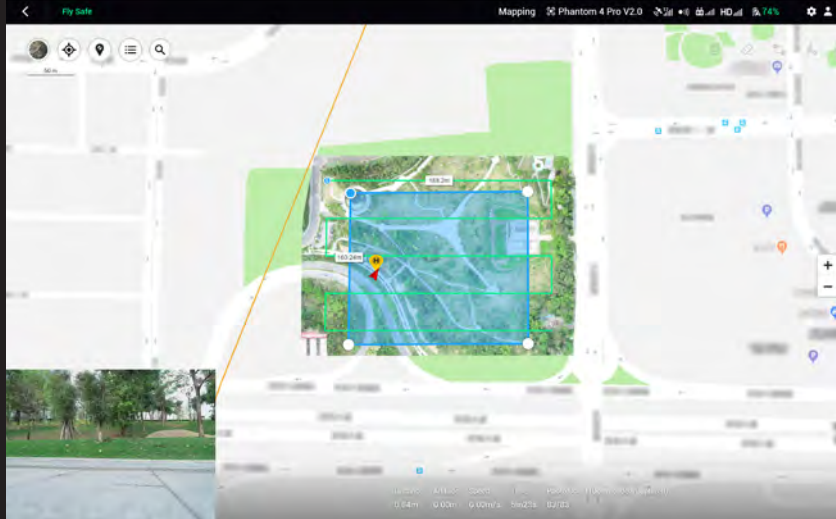
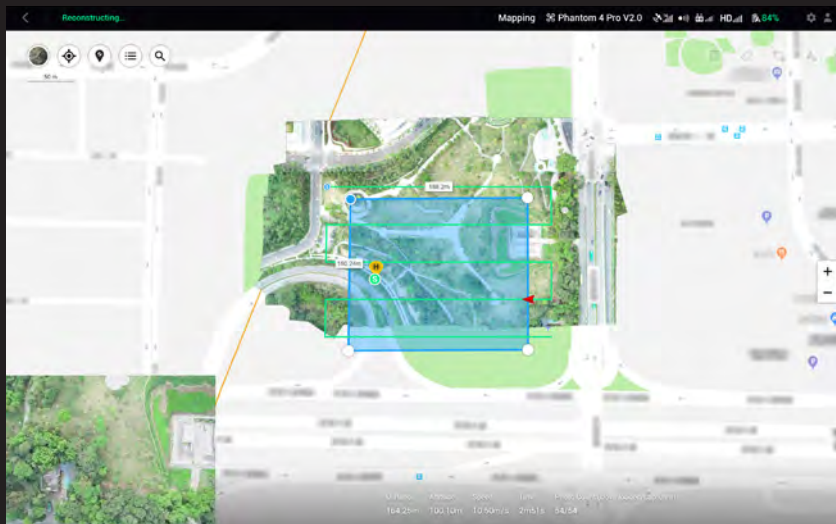
Seamless Workflows, Accurate Results

- Convert the coordinates of your maps and models into 8500+ major coordinate systems by simply selecting the output that fits your needs.
- Generate 2D orthomosaics and 3D models with enhanced absolute accuracy by setting Ground Control Points (GCPs) and checkpoints, so you can measure and inspect with ease.
- View a quality report of your mission to ensure the results meet your accuracy standards.





2D Maps



Real-time Mapping

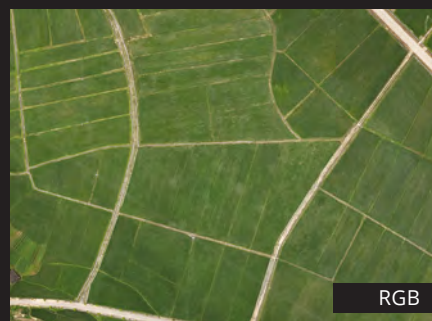
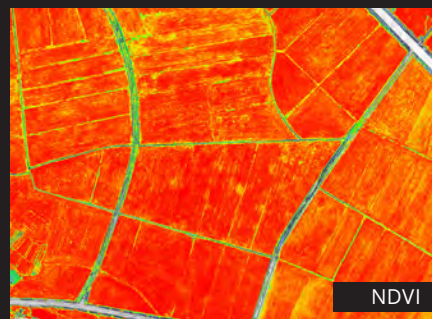
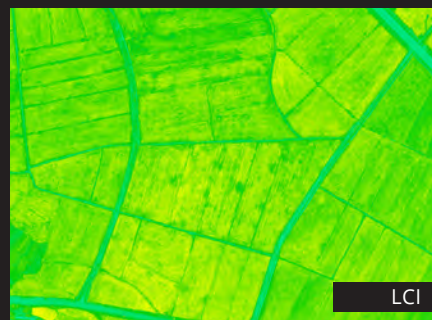
Quickly generate a 2D orthomosaic of the selected area in real-time. Not only is this ideal for creating detailed flight paths in remote areas but it's also useful for time-sensitive missions that require quick decision-making on site.



2D Reconstruction

Generate high resolution orthomosaics, enabling you to get detailed and accurate measurement results for all your critical projects.





2D Multispectral Reconstruction

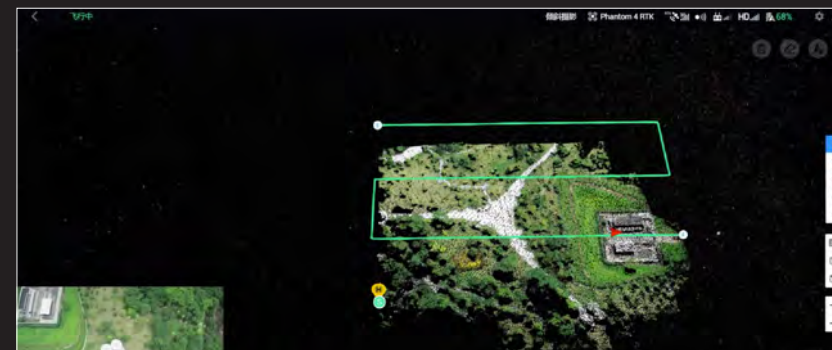
Process multispectral images to generate vegetation indices like NDVI and NDRE, gathering actionable insights that improve crop yields and help manage vegetation. *

*Multispectral Imaging Bands supported:

Blue (B): 450 nm ± 16 nm, green (G): 560 nm ± 16 nm, red (R): 650 nm ± 16 nm, red edge (RE): 730 nm ± 16 nm, near-infrared (NIR): 840 nm ± 26 nm

Vegetation indices supported: NDVI, GNDVI, NDRE, LCI, OSAVI.

3D Models



Real-time 3D Point Cloud *

When efficiency is key, quickly render and visualize a 3D point cloud of the mapped area. Make decisions based on the preliminary model and check for completeness immediately or plan 3D flights on-site.



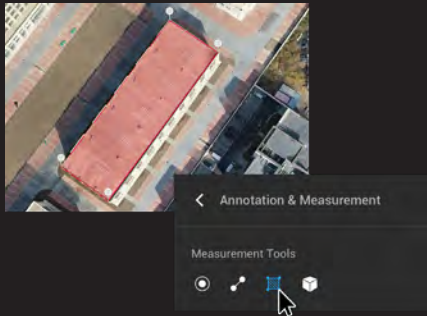
3D reconstruction

Get sharp and realistic representations of your surroundings throughout various industrial applications, be it accident reconstruction, tracking progress on major construction projects and more.

*Feature only available when using the Phantom 4 RTK (Remote controller) or Phantom 4 Pro V2.0 Phantom 4 Pro + V2.0



Data Analysis



2D & 3D Measurements

Acquire key dimensions across an array of terrains with easy-to-use analysis tools that enable you to obtain a variety of measurement data based on linear, area and volumetric measurements.



Annotation

Edit labels of measurements on existing models, which can be used for reporting and improving communication throughout ongoing projects.

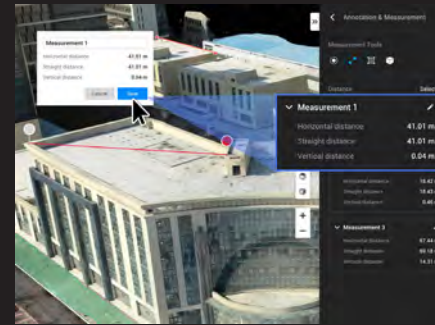


Photo Inspection

Closely inspect every detail of the model so you can pinpoint and highlight any critical elements in the real world.

Seamless Connection with Your Fleet of DJI Drones

DJI Terra is compatible with the following Phantom 4 Series drones:
Phantom 4 RTK, (Remote Controller),
Phantom 4 Pro V2.0, Phantom 4 Pro + V2.0,
Phantom 4 Pro, Phantom 4 Advanced and Phantom 4.



The Beginning of Next Generation Mapping Solutions

Harness the power of AI-driven mapping solutions designed to take your industrial projects to the next level. Whether it's object classification, site inspections and more, you can start developing task-specific mapping solutions to seamlessly carry out missions.

1 **Data acquisition**
 Define mission objective, plan desired flight plan, and with a tap of a few buttons, autonomously collect critical data so you can achieve the required outcome.

2 **Data Processing**
 Utilize refined image recognition technology to generate 2D and 3D data, resulting in a more realistic representation of your assets, objects, surroundings and more.

3 **Data Application**
 Implement tools and machine learning techniques, which can be used across a variety of different industries – like classification algorithms for identifying trees, objects, and other scenarios.

4 **Execution**
 Take the required action, and enjoy more efficient processes with machine control – be it automated crop spraying, monitoring work sites, transporting materials and more.

Terra License Plans

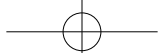
Features	Advanced	Pro
Real-time 2D Mapping	✓	✓
Agricultural application	✓	✓
KML file import	✓	✓
2D Reconstruction (Field)	✓	✓
2D Reconstruction (Urban)	✓	✓
2D Multispectral Reconstruction	✓	✓
Output Coordinate System	✓	✓
3D Reconstruction		✓
3D Mission planning		✓
GCP		✓
How to buy?	Contact us	Contact us

Streamline Your Operational Workflows

DJI Terra is available for order through official DJI dealers. Enter your details below and we'll get back to you.

About DJI Enterprise

DJI Enterprise is a global team dedicated to developing world class drone solutions for a new generation of work. These solutions help businesses across agriculture, infrastructure, public safety sectors and more to empower workers, enhance jobs and digitize operations.



dji ENTERPRISE

<https://enterprise.dji.com>

Follow us @DJIEnterprise

